

GETTING STARTED

Moving Forward With WAYRILZ

From what to expect to where to find support, this guide is here to help you get started with WAYRILZ.



All images shown within are patient portrayals.

WHAT IS WAYRILZ?

WAYRILZ is a prescription medicine that is used to treat adults with persistent or chronic immune thrombocytopenia (ITP) who received a prior treatment that did not work well enough.

It is not known if WAYRILZ is safe and effective in children.

Please see Important Safety Information on page 7, and the full Prescribing Information, including Patient Information.

 **WAYRILZ**[™]
(rilzabrutinib) 400 mg
tablets

Get Started With Confidence

What to know before starting WAYRILZ



Tell your doctor about all your medical conditions, including:

- If you have liver and/or kidney problems
- If you are pregnant and/or plan to become pregnant
- If you are breastfeeding and/or plan to breastfeed



Can WAYRILZ be taken during pregnancy?

- WAYRILZ may harm your unborn baby. If you are able to have a baby, your doctor will do a pregnancy test before starting treatment with WAYRILZ.
 - Females who are able to become pregnant should use effective birth control (contraception) during treatment with WAYRILZ and for 1 week after the last dose.
- It is not known if WAYRILZ passes into your breast milk. Do not breastfeed during treatment with WAYRILZ and for at least 1 week after the last dose.



Keep track and tell your doctor about all your medicines.

- Taking WAYRILZ with certain other medicines may affect how WAYRILZ works and can cause side effects. WAYRILZ may also affect how other medicines work.
- Tell your doctor about all prescription and over-the-counter medicines, vitamins, and herbal supplements you are taking.
- If you take a proton pump inhibitor (PPI) medicine, make sure to talk with your doctor.

Please see Important Safety Information on page 7, and the full Prescribing Information, including Patient Information.

WAYRILZ™
(rilzabrutinib) 400 mg tablets

What to know about taking WAYRILZ



Take WAYRILZ exactly as your doctor tells you to take it.

Do not change your dose or stop taking WAYRILZ unless your doctor tells you to.

How do I take WAYRILZ?



One pill



Twice a day

at about the same time each day

Do I need to take WAYRILZ with food?



Take **with or without food**. Swallow pills whole with water.

Do not cut, crush, or chew.

If you experience diarrhea, nausea, or stomach area (abdominal) pain during treatment with WAYRILZ, taking it with food may reduce these side effects.

What if I forget and miss a dose?



Take the missed dose as soon as you remember on the same day and

at least 2 hours apart from the next regular scheduled dose.

Please see Important Safety Information on page 7, and the full Prescribing Information, including Patient Information.

WAYRILZ[™]
(rilzabrutinib) 400 mg
tablets

What to Remember While Taking WAYRILZ

What should I avoid?

Avoid grapefruit, starfruit, and products that have these fruits, and Seville oranges (often used in marmalades) during treatment with WAYRILZ. These products may increase the amount of WAYRILZ in your blood, which increases the risk of side effects of WAYRILZ.

What if I take an antacid or H2 blocker medicine?

Take your dose of WAYRILZ at least 2 hours before taking an antacid or H2 blocker medicine.

What should I make sure to tell my doctor during treatment?

Let your doctor know right away if you:

- experience any side effects
- have any signs or symptoms of infection, including fever, chills, or flu-like symptoms
- have any signs or symptoms of liver problems, including stomach-area (abdominal) pain or discomfort, dark or “tea-colored” urine, or yellowing of the skin or the white part of your eyes

Will my doctor monitor me?

Your doctor will monitor you during treatment with WAYRILZ by:

- checking you for signs and symptoms of infection
- doing blood tests to check your liver, both before starting WAYRILZ and as necessary during treatment

How should I store WAYRILZ?

- Store at room temperature between 68°F to 77°F (20°C to 25°C)
- Keep tablets in the original packaging
- Protect from light and moisture
- *Keep WAYRILZ and all medicines out of the reach of children*

Please see Important Safety Information on page 7, and the full [Prescribing Information](#), including [Patient Information](#).

WAYRILZ[™]
(rilzabrutinib) 400 mg
tablets

A woman with dark hair in a ponytail, wearing a teal long-sleeved shirt, a teal quilted vest, and brown pants, is walking away from the camera in a grassy field with trees in the background. She has a white quilted backpack on her back with a wooden object sticking out of the top. The background is a bright, sunny day with green trees and a blue sky with light clouds. A yellow brushstroke-style banner is overlaid on the right side of the image.

Small steps can make a big difference

While on treatment, **talk openly with your doctor** and share how you're feeling. Log your symptoms so you can **track changes and see your progress** over time. And remember, every journey is different, so **give it time, stay consistent**, and trust in the steps you're taking.

Please see Important Safety Information on page 7, and the full Prescribing Information, including Patient Information.

WAYRILZ[™]
(rilzabrutinib) 400 mg
tablets

Support That Stays With You

sanofi *Support* | HemAssist

Connect with HemAssist Sanofi Support

Visit SanofiHemAssist.com or give us a call at 1-833-723-5463

Monday – Friday 8 AM to 7 PM ET.

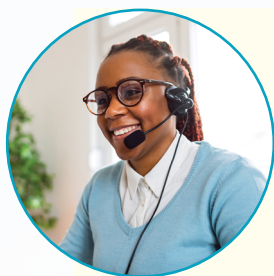
After your doctor prescribes WAYRILZ, **HemAssist Sanofi Support** can assist with access to WAYRILZ, financial assistance, and education throughout your treatment journey.

Your HemAssist team



Clinical Educator (CE)

Your CE is your point of contact for questions and tips about WAYRILZ, taking and tracking your treatment, and ongoing support.



Case Manager (CM)

Your CM is available to assist with navigating insurance coverage and identifying available financial support for eligible patients.

Here with you and for you throughout your treatment journey. Your team will not provide personal medical advice. For all questions about your individual health needs, please speak with your doctor.

Not enrolled in HemAssist yet? [Sign up](#) today.

Please see Important Safety Information on page 7, and the full **Prescribing Information**, including **Patient Information**.

WAYRILZTM
(rilzabrutinib) 400 mg tablets

WHAT IS WAYRILZ?

WAYRILZ is a prescription medicine that is used to treat adults with persistent or chronic immune thrombocytopenia (ITP) who received a prior treatment that did not work well enough.

It is not known if WAYRILZ is safe and effective in children.

IMPORTANT SAFETY INFORMATION

What should I tell my healthcare provider before taking WAYRILZ?

Tell your healthcare provider about all of your medical conditions, including if you:

- have liver problems
- have kidney problems
- are pregnant or plan to become pregnant. WAYRILZ may harm your unborn baby. If you are able to have a baby, your healthcare provider will do a pregnancy test before starting treatment with WAYRILZ. Females who are able to become pregnant should use an effective birth control during treatment with WAYRILZ and for 1 week after the last dose.
- are breastfeeding or plan to breastfeed. Do not breastfeed during treatment with WAYRILZ and for at least 1 week after the last dose.

Tell your healthcare provider about all the medicines you take, including prescription and over-the-counter medicines, vitamins, and herbal supplements. Taking WAYRILZ with certain other medicines may affect how WAYRILZ works and can cause side effects. WAYRILZ may also affect how other medicines work.

What should I avoid while taking WAYRILZ?

You should avoid grapefruit, starfruit and products that have these fruits, and Seville oranges (often used in marmalades) during treatment with WAYRILZ. These products may increase the amount of WAYRILZ in your blood, which increases the risk of side effects of WAYRILZ.

What are the possible side effects of WAYRILZ?

WAYRILZ may cause serious side effects, including:

- **Serious infections.** WAYRILZ can increase the risk of infections, including serious infections that can lead to death. Your healthcare provider will check you for signs and symptoms of infection during your treatment with WAYRILZ. Tell your healthcare provider right away if you get any signs or symptoms of infection, including fever, chills, or flu-like symptoms.
- **Liver problems including Drug-Induced Liver Injury (DILI).** Liver problems, which may be severe, life-threatening, or lead to death have happened in people treated with Bruton's tyrosine kinase (BTK) inhibitors. Your healthcare provider will do blood tests to check your liver before and as necessary during treatment with WAYRILZ. Tell your healthcare provider right away if you have any signs or symptoms of liver problems, including stomach-area (abdominal) pain or discomfort, dark or "tea-colored" urine, or yellowing of the skin or the white part of your eyes.

The most common side effects of WAYRILZ include diarrhea, nausea, headache, stomach area (abdominal) pain, and COVID-19.

These are not all of the possible side effects of WAYRILZ.

Please see full [Prescribing Information](#), including [Patient Information](#).

WAYRILZ[™]
(rilzabrutinib) 400 mg
tablets

Your Journey With WAYRILZ Starts Here



This guide is just the beginning.

As you get started on WAYRILZ, keep exploring resources made to support you every step of the way.

Go to [WAYRILZ.com](https://www.wayrilz.com) to learn more

IMPORTANT SAFETY INFORMATION

Tell your healthcare provider about all the medicines you take, including prescription and over-the-counter medicines, vitamins, and herbal supplements. Taking WAYRILZ with certain other medicines may affect how WAYRILZ works and can cause side effects. WAYRILZ may also affect how other medicines work.

Please see Important Safety Information on page 7, and the full Prescribing Information, including Patient Information.

sanofi

© 2025 Sanofi. All rights reserved.

WAYRILZ, HemAssist, and Sanofi are trademarks of Sanofi or an affiliate.

MAT-US-2508675-v1.0-08/2025

WAYRILZ™
(rilzabrutinib) 400 mg
tablets